



**ENVIRO TREAT ENGINEERS
PRIVATE LIMITED**

INDUSTRY ALSO NEED

**PURE
AIR**

**Offering a Wide Range of
Air Pollution Control Device And
Material Handling Equipments**



An ISO 9001 :2015 Certified Company



LEADERSHIP

*Through Latest
Art of Technology*

Address from MD



“

*My Heartiest thanks for spending time on my speech.
Our organization giving services to all nations since
last 24 years in throughout our country and worldwide.
Our main moto is to stress in latest Art of Technology
on Air Pollution Control System with economical
budgetary concept, so that it can helps to provide the
clean breathing to the nation. Enjoy having services at
your "Beck and Call".*

”

Prasanta Kumar Das
Managing Director (M.D.)



OUR MOTO
REDUCE
GLOBAL WARMING
ACHIEVE
GREEN REVOLUTION

About The Company

Enviro Treat Engineers Pvt. Ltd., established since 1998 and the registered head office is located in Kolkata, India.

We are the Leading manufacturer for Air pollution Control System and Dust Handling Equipment sparked-out in the Country and throughout the world. The latest Art of Technology contributes the industries since 1998, banking our Air Pollution Control Design expert & capital of Experience we gathered since 1990s.

We made our presence sensed across several countries and our major contribution in the field of Steel Melting shop, Foundry, Ferro Alloys Melting shop, Non-Ferrous Melting shop, Cement industries etc. Our Engineers are well trained to provide their best efforts and contribution in these regards to the industries, surging forward with spirits held high by controlling air pollution and promote Green Environment.

In domestic and global market, our honest effort and latest art of Technology has become well accepted, as a result, we have been energized to bring to our quality in other step ahead.



World Wide Installation

Our **MISSION**

We are one of the Leading manufacturers to fight against Air Pollution.

Our mission is to build environmental health and justice by preventing particulate matter and controlling emission level and building green healthy, and sustainable environment.

By defining and solving problems of the working and environment. We aim to become our client's reference points for quality and service. Through personal competence, participation, research and design, we strive for excellence in each aspect of our business.

Our **VISION**

The most vulnerable population are suffering from environmental degradation. We provide world class physical infrastructure for the treatment of polluted air /fumes to protect, restore and enhance environmental quality towards environmental integrity, economic viability and good human health. Our vision to think better return of investment always.

Our **Guaranteed Emission Limit**

< 10 mg / Nm³ < 30 mg / Nm³

< 12 mg / Nm³ < 40 mg / Nm³

< 20 mg / Nm³ < 50 mg / Nm³

< 25 mg / Nm³

Infrastructure



Effective working area - **70000 sq. ft.**



Work Shop



MACHINE SHOP

We have various in-house equipment like Lathes, Drilling machine, Boring machine, Dynamic Balancing, MIG, TIG, Plasma cutter, Shearing machine, Power hacksaw, Ball press, Power Press, Vertical Milling machine, Bending machine, that provides a fabrication finished highly precised.





We also have several material handling equipment's like Hydra, Fork Lift, Trolley, Monorails, Chain-Pulley blocks, EOT Cranes etc.



OUR AIR POLLUTION CONTROL DEVICES

Primary Fume Extraction System
Secondary Fume Extraction System
Dust De Dusting System
Dust Extraction
Bag House Filtration
OFF-line System (Automation)
Multi-clone Device
Spark Arrestors
Centrifugal Fan/ ID Fan/ Industrial Fan
Heat Exchanger (FD Cooler)
Wet Scrubber
Pug Mill
Rotary Air Valve and Screw Conveyer

AREAS OF APPLICATION INDUSTRIES

Steel Melting Shop
Ferro Alloy Plant
Foundry
Sponge Iron
Cement Industries
Mining and Coal Handling
Lead and Alloy Melting
Aluminum Melting Plant
Coal Fired / Husk Fired Boiler
Dust Handling

PROJECTED AREAS OF APPLICATION

Steel Melting Shop
Ferro Alloy Plant
Foundry
Sponge Iron
Cement Industries
Mining and Coal Handling
Lead and Alloy Melting
Aluminum Melting Plant
Coal Fired / Husk Fired Boiler
Dust Handling





More than 300+ Installations



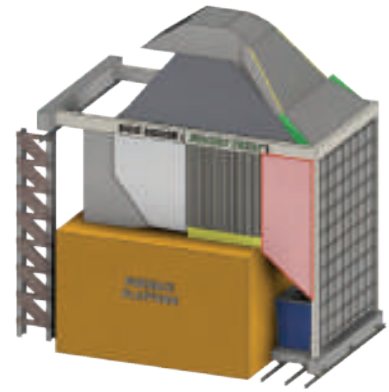
VARIOUS TYPES OF SUCTION



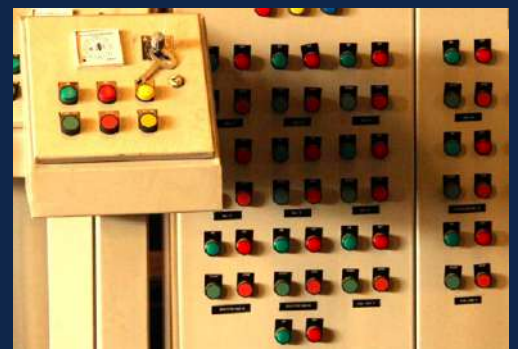
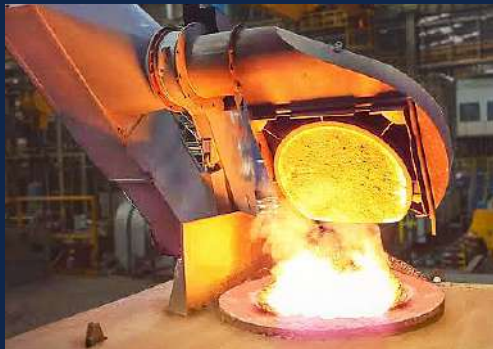
Top Suction



Side Suction

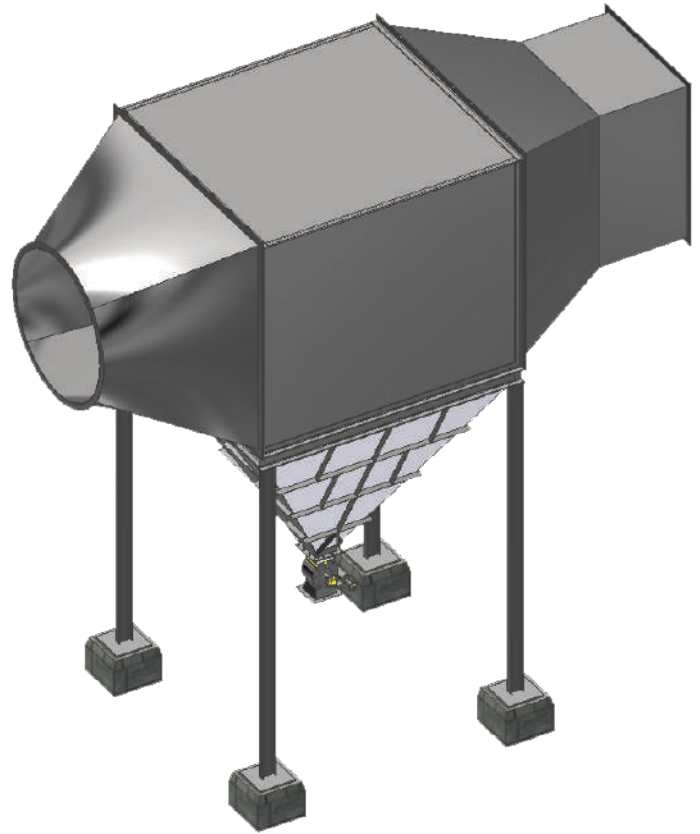


Dog House



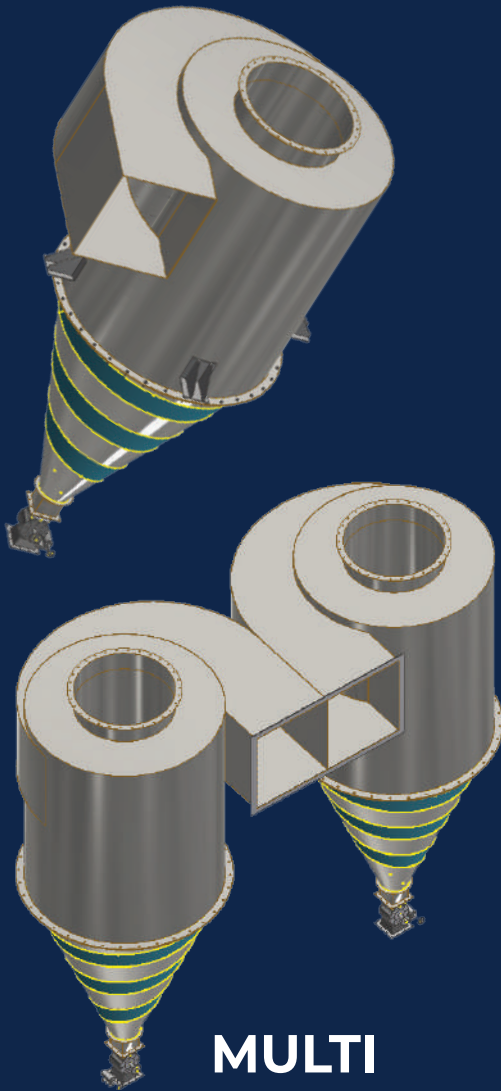
SPARK ARRESTOR

A Spark Arrestor is a device which prevents the emission of flammable debris/sparks from combustion sources. A Spark Arrestor plays a critical role in the prevention of simulated sparks while fume is flowing through the device.



CYCLONE

Cyclones are separated devices that use the principle of inertia to remove particulate matter from flue gases. Cyclone generally removes larger pieces of particulate matter.

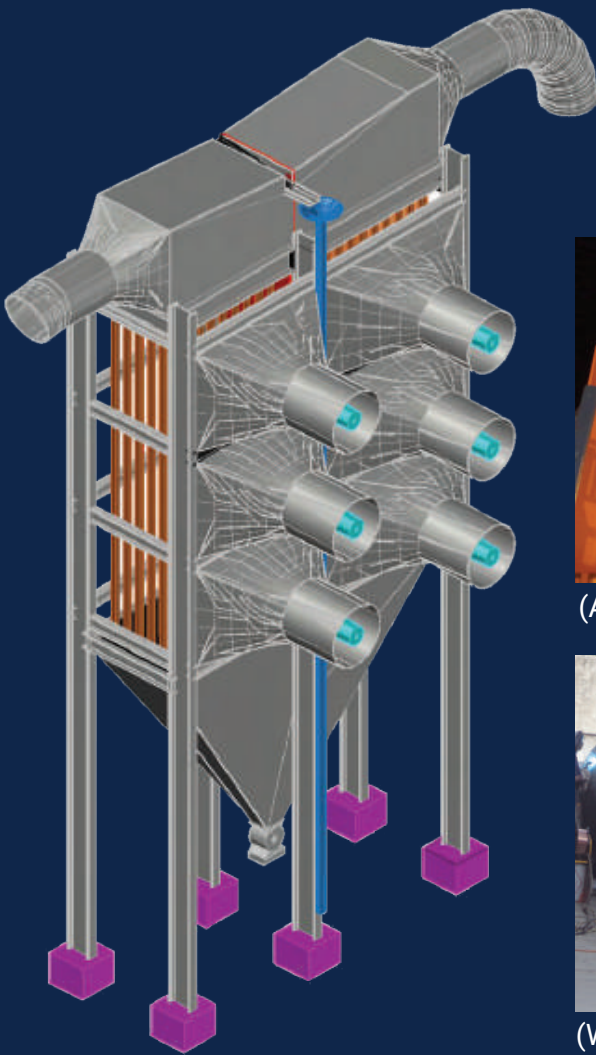


**MULTI
CLONES**



HEAT EXCHANGER (FD COOLER)

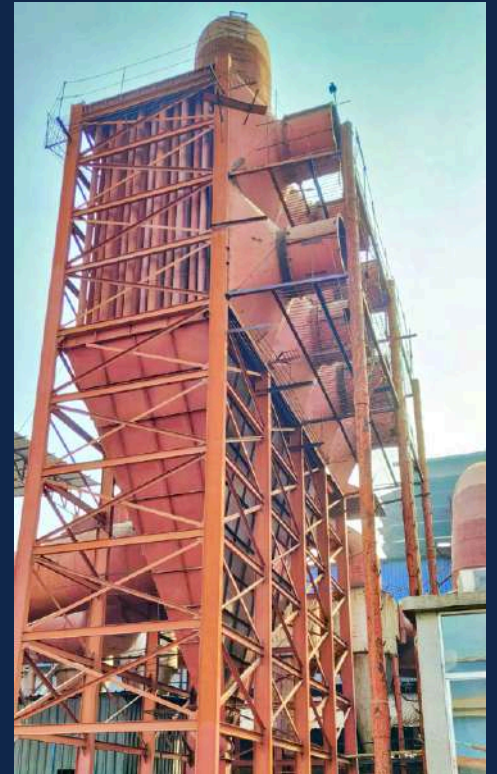
The Forced Draught Cooler is Tubular convective type Heat Exchanger used for cooling of Hot gases.



(Arrestor cum Cooler)



(Water-Cooled)



(2-Pass Force Air Cooled)



FILTER HOUSE

ADVANCED TECHNOLOGY

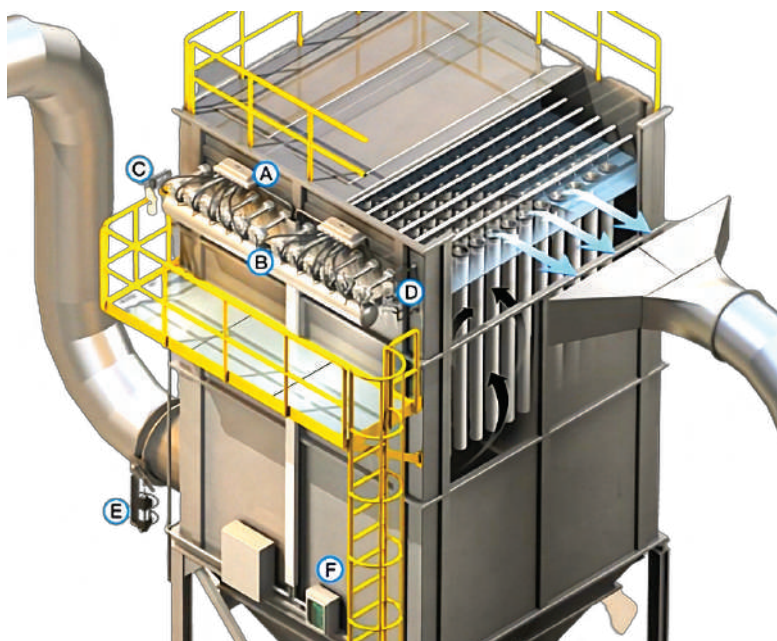
The fumes are drawn through the bags from outside and a layer of dust accumulates on the filter media and clean air is filtered out from inside. When a sufficient differential pressure occurs the cleaning process begins. There are two types of Bag House, ON-Line System & OFF-Line System.

Enviro Treat provides excellent quality non woven double stitched Snap-Type Filter Bags that ensures better durability and performance.



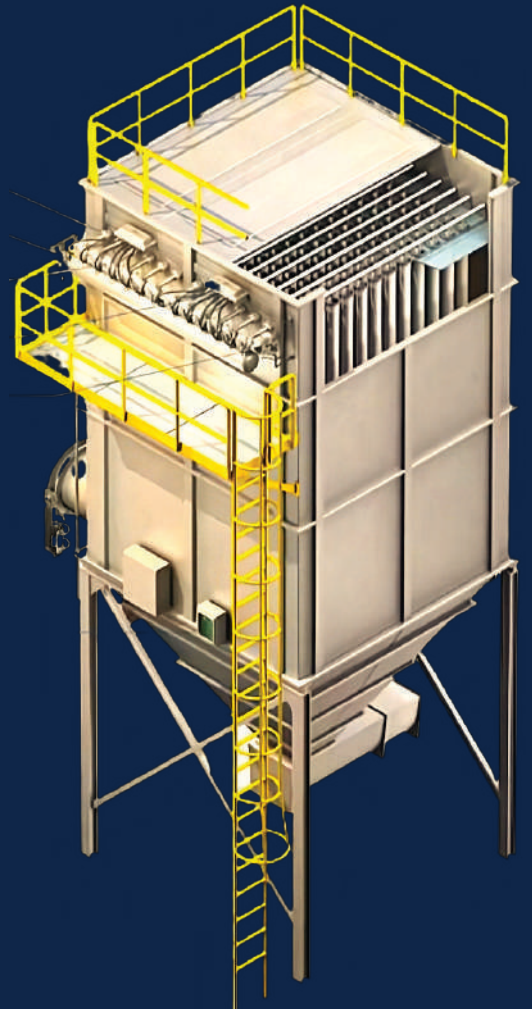
- ◆ Polyester Based PTFE membrane
- ◆ Acrylic Filter Bag
- ◆ Nomex Filter Bag
- ◆ Glass Fiber Bag, etc.
- ◆ No-Micron Porosity Bag
- ◆ Cartridge Filters

- ◆ Silicon Treated EGG Cell Finished
- ◆ Anti-static Filter Bag
- ◆ Ryton Filter Bag
- ◆ Bag for Rough & Oily Scrap
- ◆ Low, Medium, High GSM Filter
- ◆ Special Filters for Ferro-Alloy Plant





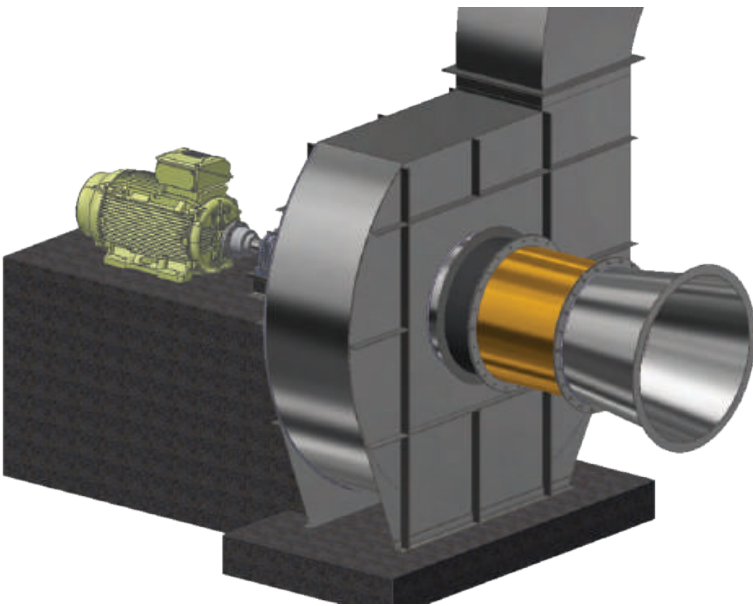
**PULSE JET
DUST
COLLECTION**



CENTRIFUGAL BLOWERS

A Centrifugal Blower is a mechanical device for moving air and other gas through a specified path. They are typically used in the ducted application to draw air through the duct work, through pollution equipment to the exhaust stack.

Kinetic energy produced by the blowers during rotation is used to increase the negative pressure to the air stream. Centrifugal blowers drag air into a circular motion with centrifugal forces speeding up air flow radially and outwards to the exhaust stack.



INDUSTRIAL BLOWERS

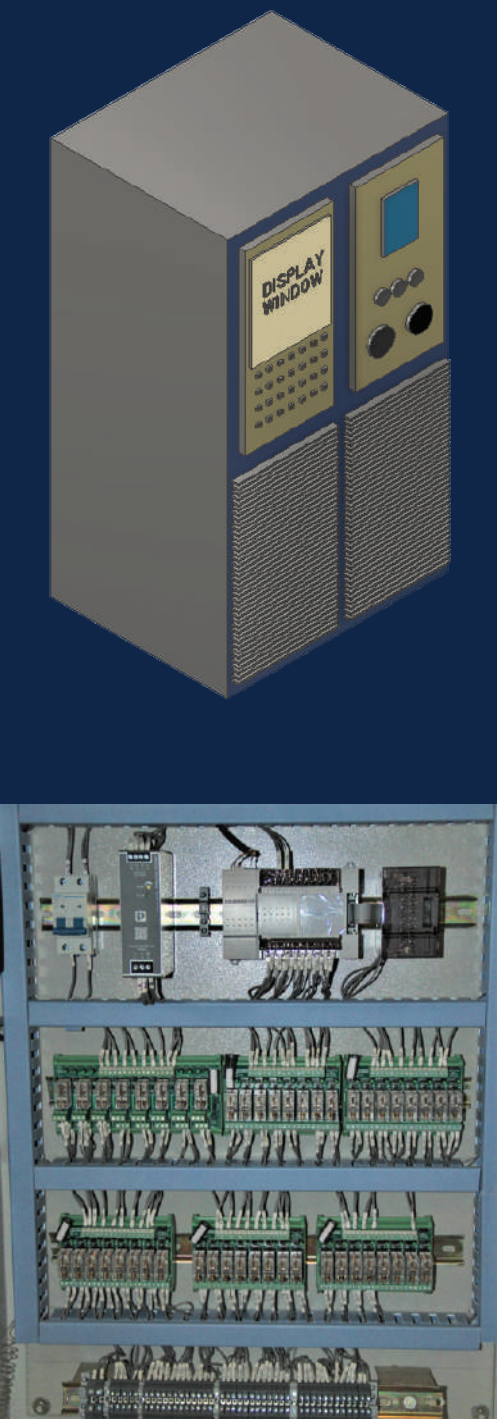
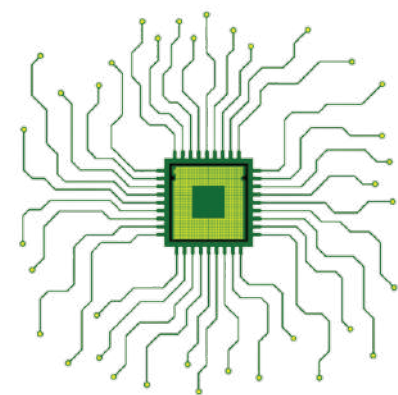


ELECTRICAL CONTROLLER

(MICROPROCESSOR/PLC BASED)

A Time switch (also called a timer switch, or simply timer) is a timer that operates an electrical switch controlled by the timing mechanism.

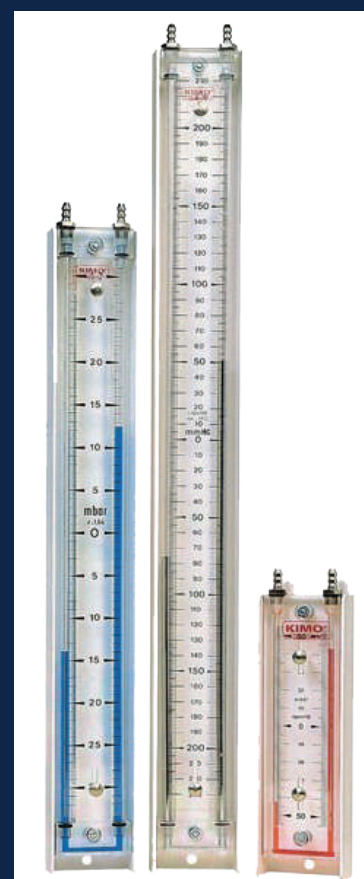
The timer may switch equipment on, off, or both, at preset timer or times, after a preset interval, or cyclically. A countdown time switch switches power, usually off, after a preset time. A cyclically timer switches equipment both on and off at preset times over a period, then repeat the cycle. Once the coil of the timer is energized the timer starts to count from zero to the preset time, this count is known as the accumulated time. The contacts of the timer will stay in their changed state for the same amount of coil is energized.



PARTICULARS	SPECIFICATIONS
Continue Automation System For Filter Cleaning	Through Independent Sequence Control Logic Interface
Control & Separation Of Dust Compartment	Through PLC Logic
Time Delay	Automatic
Elaps Time Period To De- Energised / Energised Pilot Valve/ Count	Adjustable
Sequence Step Time	Adjustable
Set Point Control Of Pulse	Provided
Open loop Control System	Provided
Light Emission Diode	Provided
Accuracy On Time Sequence	±5%
Voltage	Input—230Volt Output—24 Volt Dc
D.C. Kit	Special Requirement For Voltage
Coil Voltage	220 Volt
Input Fuse	300 mA
Operation On Time	1m sec. to 999 m sec.
Operation Off/Pause Time	1m sec. to 999 m sec.
Process Interlocks	Potential Free 'No' Contacts
System Feedback	Provided
Maintenance In Operation	Possible
Protection Of System	IP-54
System Cooling	Through Exhaust Fans

INSTRUMENTATION

We aim to supply reputed & branded instruments and measuring devices. The main application of instrumentation in the field of air pollution control system is observation, measurement and control. The main parameters are Temperature, Pressure Difference, Time etc. Here are some of the instruments.



Differential Manometer



Thermocouple



Pressure Gauge



Digital Temperature Controller



Solenoid Valve



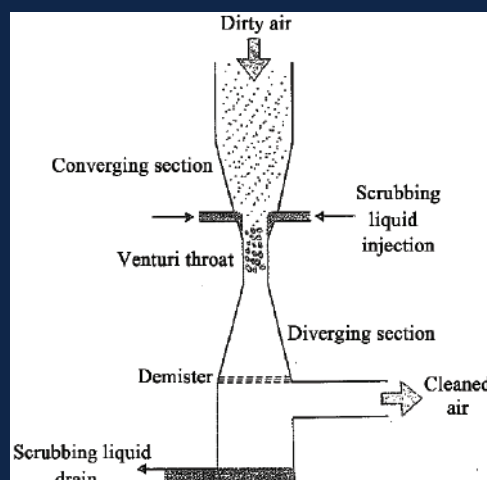
Other Instruments



Pneumatic Cylinder

WET SCRUBBER & VENTURI

Our wet scrubber generally comprises of Packed Bed, Pumped liquid via Sprinklers, Mist Eliminator, Chemical tank, etc. Wet Scrubbers are design to collect gaseous pollutants like NO_x, Sox etc. Wet Scrubbers resource pollutants by capturing them in liquid droplets.



DUST HANDLING

ROTARY AIR VALVES



Rotary feeders are used in dust collector systems both in pressure style and vacuum style served as a “LOCK” to prevent air loss while simultaneously performing vital material handling functions. The Veins/ Blades turns during the operation via chain-drive geared motor. The air is shield between the inlet and output port, this allow the extracted/filtered dust to travel downward through the valve.

SCREW CONVEYOR



A Screw Conveyor is a device mechanized that uses a rotating helical screw blade, usually within a tube shell, to move extracted dust. This mechanism is operated via geared motor. And the effluent dust falling from Rotary air valve output port get into the screw Conveyor and the dust is conveyed through the Screw conveyor to its output port.



SECONDARY FUME EXTRACTION SYSTEM

SECONDARY SUCTION



This type of suction is generally applied during Induction Furnace tilting and pouring operation or where there is enough gaseous smoke in the Industrial Workshop, where white smoke travel upwards the plant shed ceiling with a velocity. This leads to unhealthy environment inside the plant and working atmosphere, which causes jamming of gear box, affect the locomotion and mechanical performance of other devices & serious health issues to human being.

Thus, these gases are sucked via suction Hoods planted on the shed and Dog House of the shed. Then the gases travel through the common header duct to devices like Cyclones and then to ID Fan and exhausted through Stack/-Chimney.

This type of Fume Extraction System is called Secondary Fume Extraction System.

A Primary and a Secondary Fume Extraction System installed together to provide 99.9% clean and healthy Atmosphere for the Industry, and thereby the total Air Pollution Caused by the Industry is Controlled.

TESTING & CONTROL



BLOWER TESTING BED



DP TEST



DB LEVEL METER



PANEL TESTING



LOGIC CONTROLLER TESTING

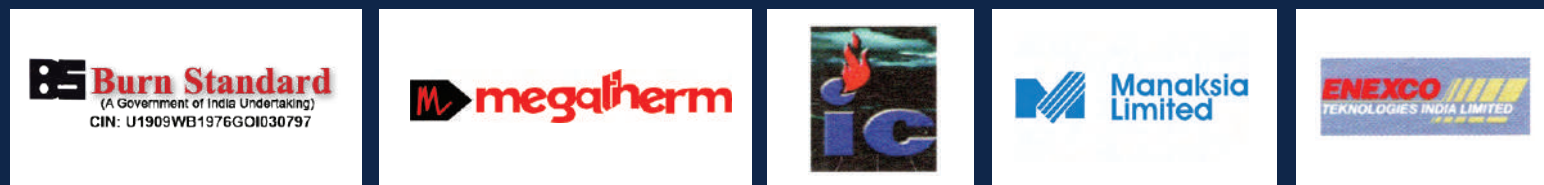


FILTER TESTING



BALANCING MACHINE

MAJOR CLIENTELE



Books & Standards we Follow



International
Organization for
Standardization



Japanese Industrial Standards Committee



British Standards



Bureau of Indian Standards



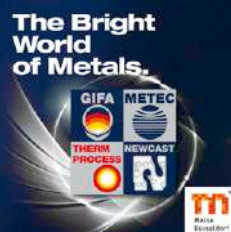
American National Standards Institute



Defining Science for OHS Experts



Major Participations



Indian Chamber of Commerce



Saudi Arabia 2023





ENVIRO TREAT ENGINEERS PVT. LTD.

An ISO 9001 : 2015 Certified Company

HEAD OFFICE

36A/1, Sri Aurobindo Sarani, Kolkata 700005, West Bengal, India

Ph: +91-33-25437120 | +91-9339786742

WORKS



+91-9433731576



217/1, East Dulepara Road, P.O. Madral,
Dist - 24 Pgs (N), Pin - 743 126,
Near Kalyani Express Way, W.B., India



envirotreatengineers@rediffmail.com



www.envirotreat.net

socially connect with us

